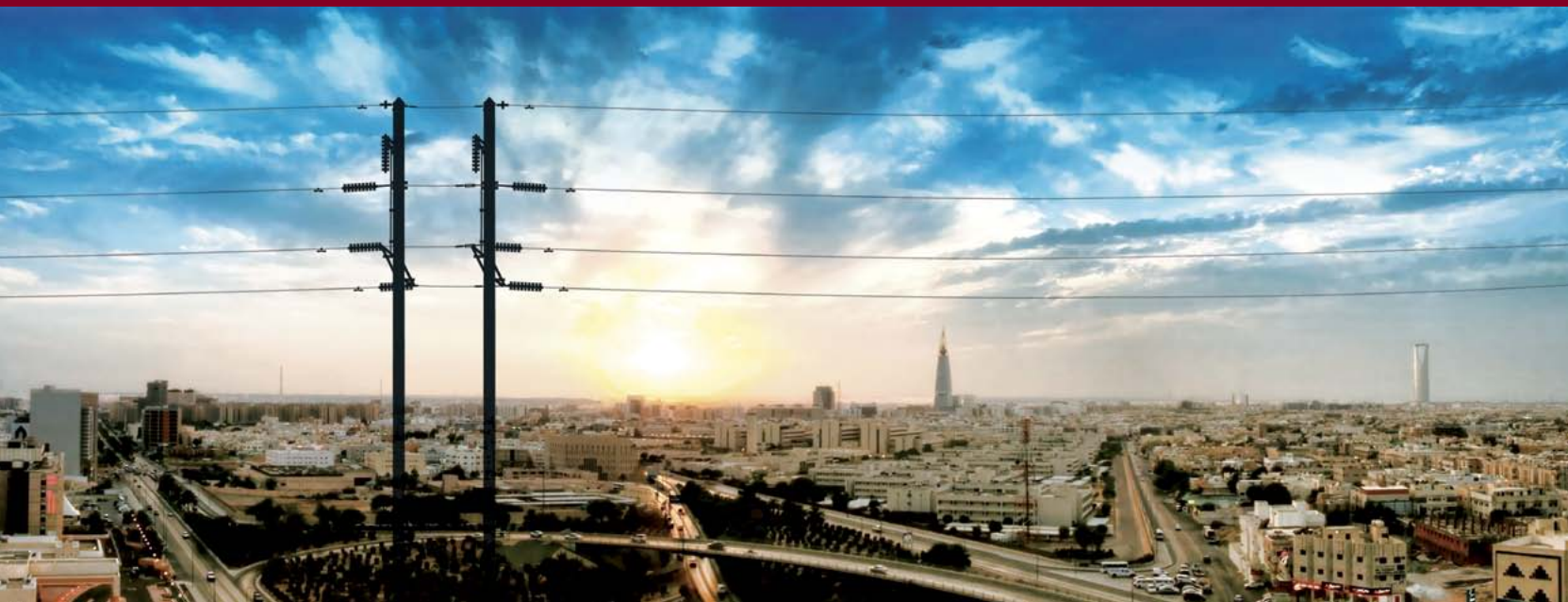


POWERING THROUGHTIME AND BOUNDARIES



T&D POLES

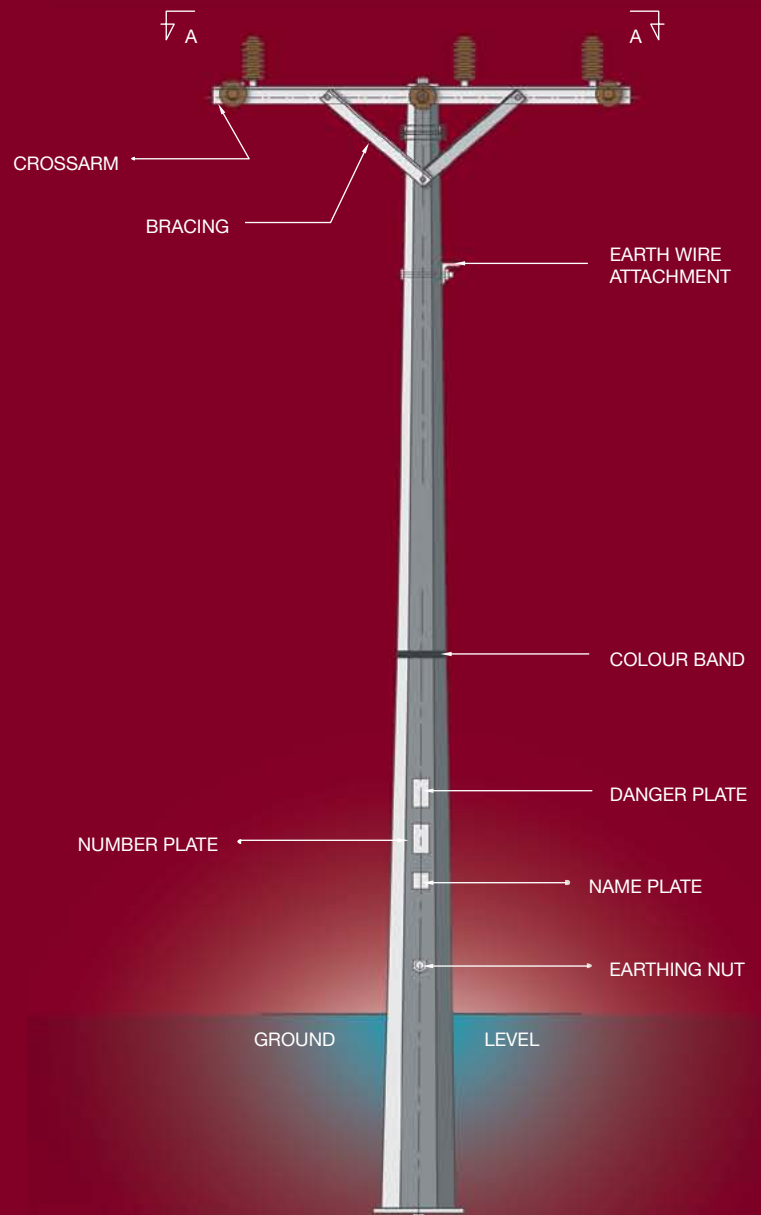


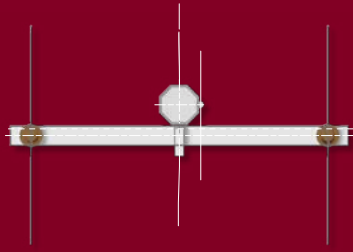
البابطين للطاقة و الاتصالات
AL-BABTAIN POWER & TELECOM



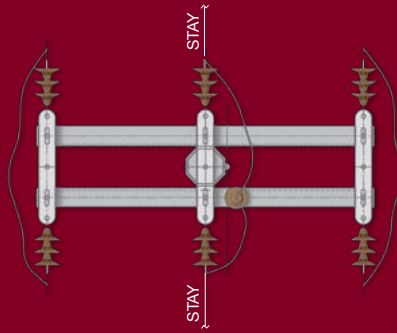
H.T TRANSMISSION POLES SINGLE CIRCUIT

1. Distribution Poles for Overhead L.T./M.T Lines
2. H.T Transmission Poles/ Single Circuit
3. H.T Transmission Poles/ Double Circuit
4. Transmission Monopoles for H.V overhead lines

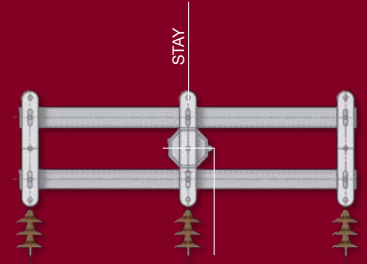




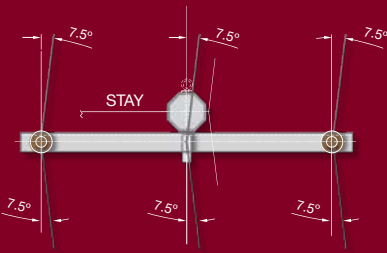
VIEW FROM A-A
INTERMEDIATE (0° - 5°) STR.



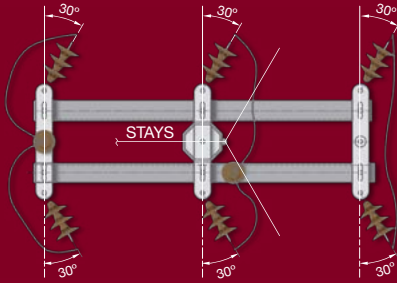
VIEW FROM A-A
SECTION STRUCTURE



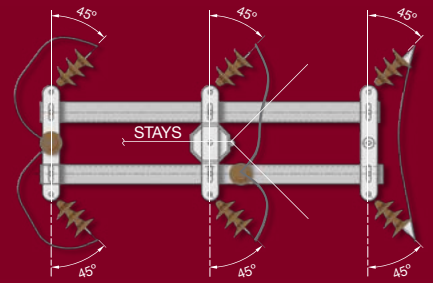
VIEW FROM A-A
TERMINAL STRUCTURE



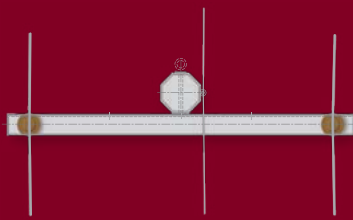
VIEW FROM A-A
LIGHT ANGLE (6° - 15°) STR.



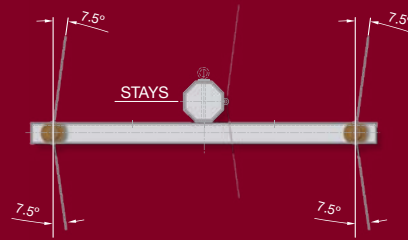
VIEW FROM A-A
MEDIUM ANGLE (16° - 60°) STR.



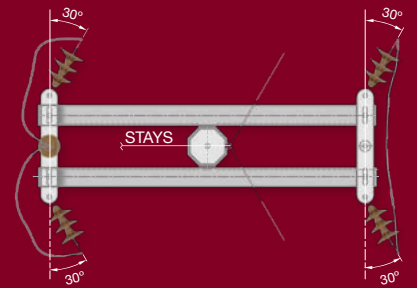
VIEW FROM A-A
HEAVY ANGLE (61° - 90°) STR.



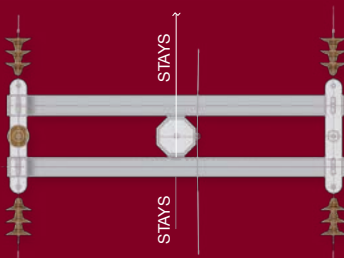
VIEW FROM A-A
INTERMEDIATE (0° - 1°) STR.



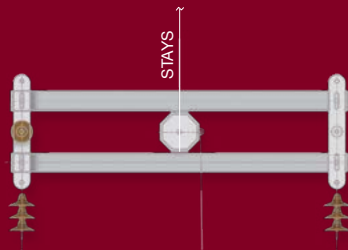
VIEW FROM A-A
LIGHT ANGLE (6° - 15°) STR.



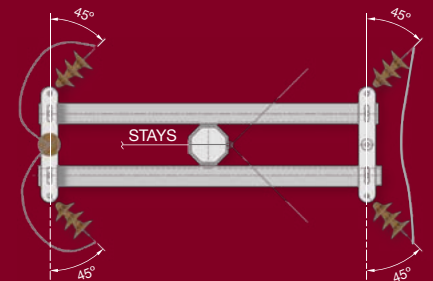
VIEW FROM A-A
MEDIUM ANGLE (16° - 60°) STR.



VIEW FROM A-A
SECTION STRUCTURE



VIEW FROM A-A
TERMINAL STRUCTURE



VIEW FROM A-A
HEAVY ANGLE (61° - 90°) STR.

DISTRIBUTION POLES FOR OVERHEAD L.T./M.T LINES

Distribution poles for Overhead L.T/ M.T Lines are designed with features you won't find in any other pole - uniform dimensions, and consistent strength. Moreover, it has lower life costs, which makes it an even more powerful type of pole.

The octagonal section poles for low and medium voltage overhead lines are manufactured by press shaping sheets and subsequent longitudinal welding.

These operations are carried out by using state of the art technologies.

Dimensions & Tolerance

According to the clients specifications

Materials

The steel generally used to manufacture these poles is EN100271- S355J0, with the following mechanical features:

Yield Strength Min 355 N/mm²
 Tensile Strength 490 630 N/mm²

On request, these poles can be manufactured

with steel ASTM A572, grade 60 with the following mechanical features:

Yield Strength Min 415 N/mm²
 Tensile Strength Min 520 N/mm²

Marking

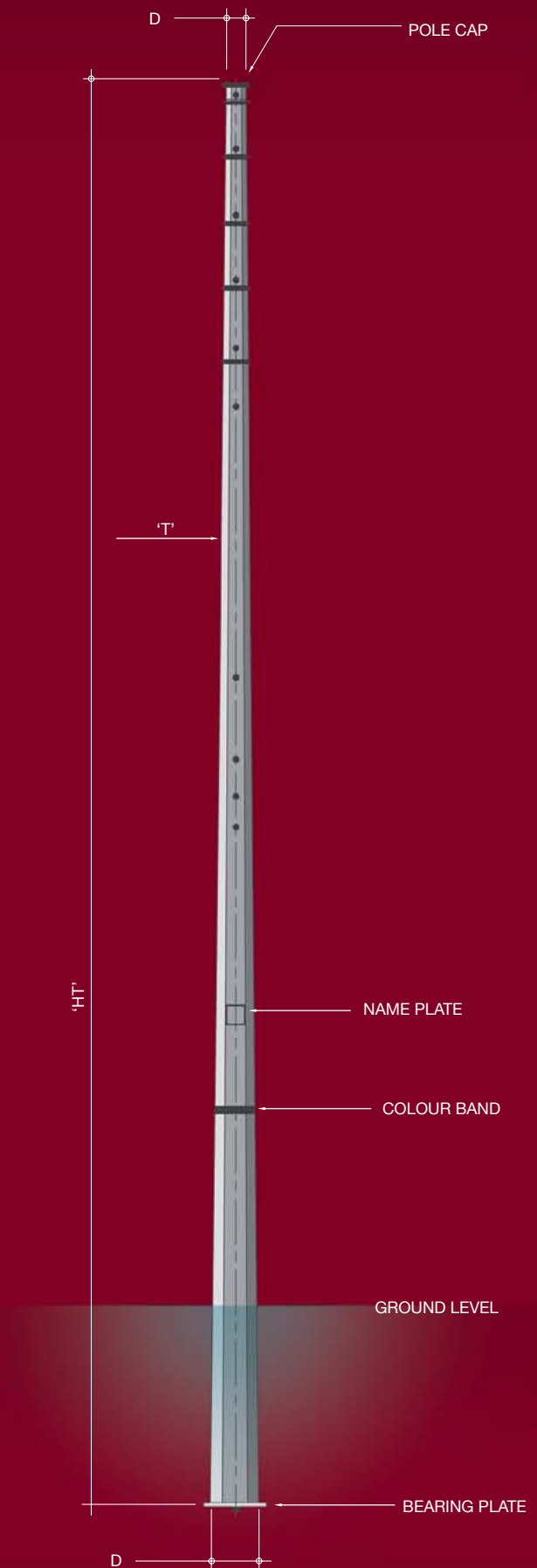
Marking of the poles is carried out by punching, type, class, dimensions of the poles, the year of manufacturing with a name plate attached to the pole, and color bands which can be applied on request.

Surface protection

The poles are supplied with various types of protection against corrosion.

- Hot dip galvanization: by immersion in molten zinc bath, carried out in compliance with BS EN ISO 1461 or ASTM 123.
- Various coating thicknesses are provided depending upon severity of the corrosive environment.

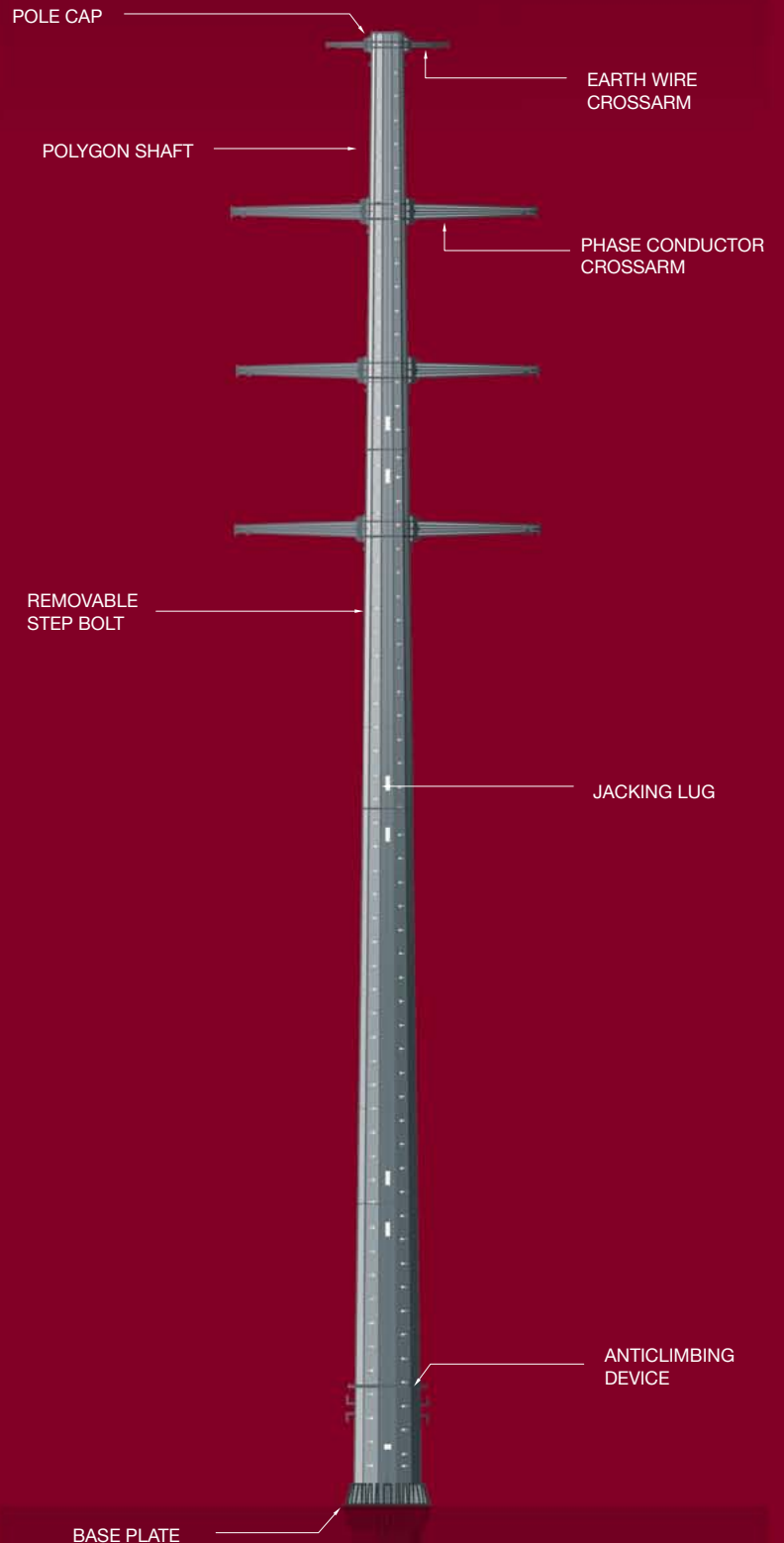
Pole type	HT. (MTR)	d (mm)	D (mm)	t (mm)	Pole (wt. kg)	Pole class (kg. UL)
OC10	10	100	345	4	235	803
OC12	12	155	390	4	345	1509
OC13S	13	155	410	4	390	1530
OC14S	14	155	430	4	450	1564
OC14D	14	155	600	4	560	2431
OC15S/D	15	155	450	4	480	1545
OC10SFS	10	230	590	5	545	4968
OC12SFS	12	230	710	7	1043	8517
OC13SFS	13	230	750	7	1180	8781
OC14SFS	14	230	70	7	1322	8874
OC15SFS	15	230	830	7	1472	8898
50 Feet	15	220	450	4	770	2462
55 Feet	16.764	220	590	6	1112	3537
60 Feet	18.288	220	680	6	1345	4108
65 Feet	19.812	220	720	8	2008	5363
70 Feet	21.336	220	680	6	1540	3312
75 Feet	22.86	220	680	6	1655	3140
80 Feet	24.384	220	680	6	1759	2905
85 Feet	25.908	221	681	6	1862	2798



TRANSMISSION MONOPOLES FOR HIGH VOLTAGE OVERHEAD LINES

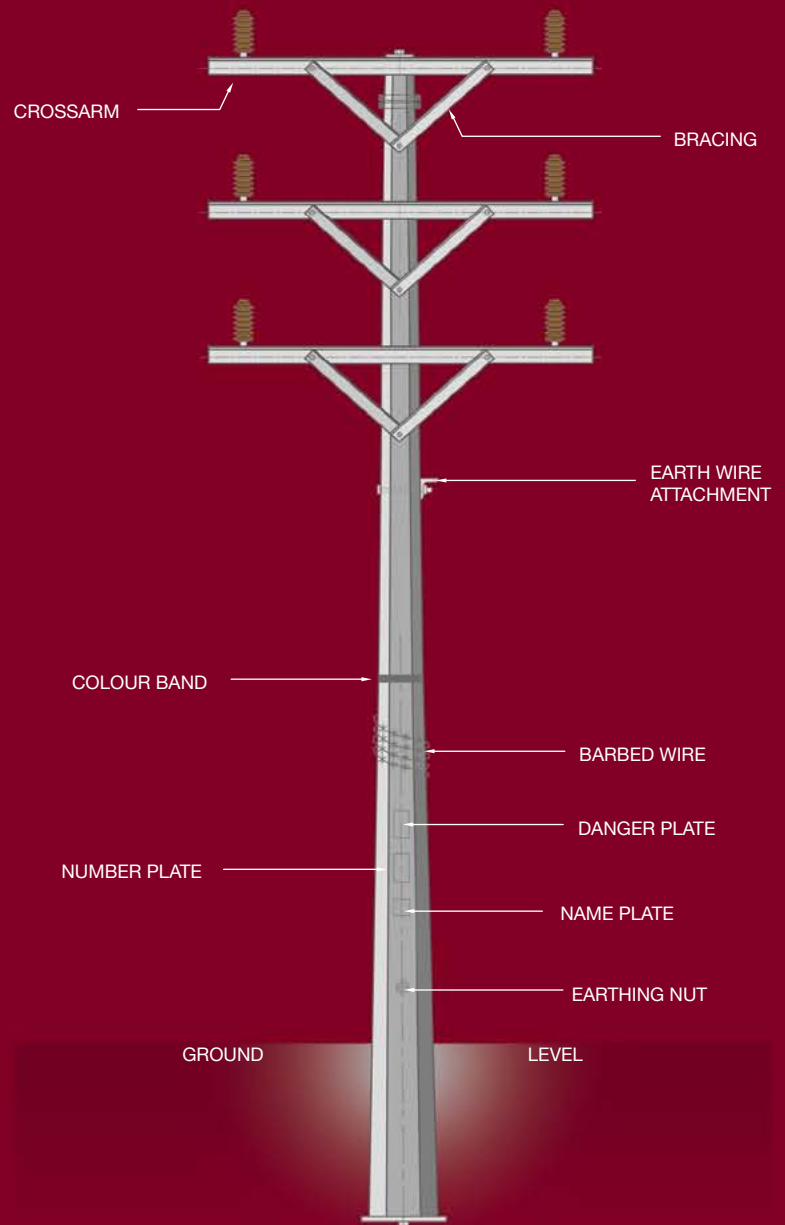
The Transmission Monopole for High Voltage Overhead Lines is expanding the practicality and easiness both inside and outside the actual usage. It has a minimal installation cost, as well as a positive environmental impact for its slim and aesthetic design. Polygonal steel poles to support the overhead lines in a range of heights and performance that allows their use in numerous cases. Even poles giving the greatest performance are within totally acceptable weight limits. These monopoles are excellent for towns & areas where spaces are constraint, rather than in the open countryside. Its environmental impact is undoubtedly more pleasing than that of the enormous trestles. It requires practically no maintenance since the galvanizing coating protects these poles, and it is guaranteed against time. Due to the materials used, these poles are able to withstand exceptional conditions, such as abnormal & asymmetrical loads.

The design section of Al-Babtain pole factory, designs these monopoles with the help of computer programs and ensures that the users can always find the most convenient solution both technologically and economically. Strict quality control norms are set and observed at every stage of the manufacturing process of these poles. Per request, a load test can be carried out on all types of monopoles in Al-Babtain tower testing stations, to verify the design of these monopoles.



H.T TRANSMISSION POLES DOUBLE CIRCUIT

With H.T Transmission Poles/ Double Circuit, you can have your own customized design. No longer maintenance expenses can be a burden since it has a low maintenance cost. The H.T Transmission poles/ double circuit is a selfsupporting device, which is one of its unique features.



www.al-babtain.com.sa



البابطين للطاقة و الاتصالات
AL-BABTAIN POWER & TELECOM