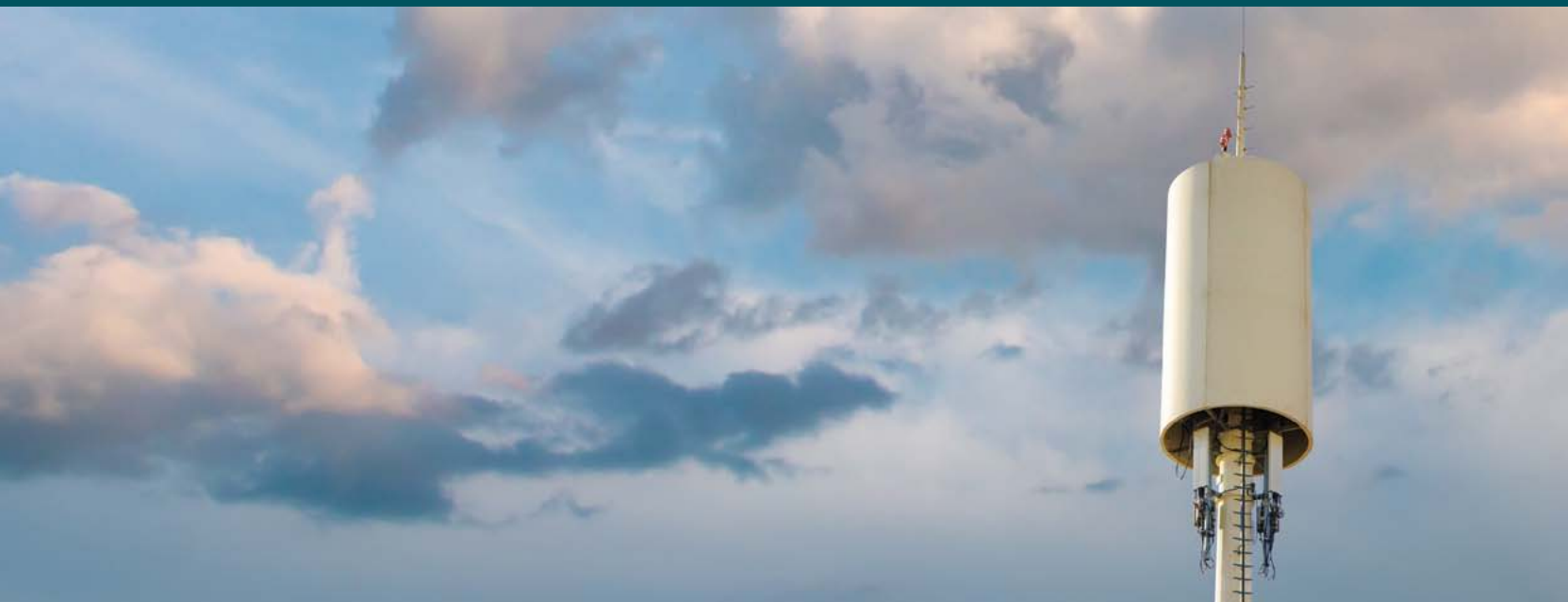


# SECURING A CONNECTION ANYWHERE



RAPID DEPLOYMENT SOLUTIONS  
**RAPID DEPLOYMENT  
CAMOUFLAGE MONOPOLE  
(RDCM)**



البابطين لبلاك  
AL-BABTAIN LeBLANC

# RAPID DEPLOYMENT SOLUTIONS

## **RAPID DEPLOYMENT CAMOUFLAGE MONOPOLE (RDCM)**

Rapid Deployment Camouflage Monopole (RDCM) is a compact camouflage site solution, which is environmentally blending and suitable to install anywhere in the neighborhood. It is capable of carrying the multi-operator loading and easily deployable, and redeployable.

Moreover, the RDCM is a polygonal monopole built on pre-cast foundation, assembled in segments by flange-type bolted connections, having 1.8m diameter circular antenna mounting system with platform at top which is encased by a camouflage GRP covering having a diameter of 2.8m and length of 6.5m. This product is developed to assist customers to maintain the aesthetic look of the structure blending with surroundings & is configured for easy installation and allowing re-deployment at a short period of time. RDCM is designed for a minimum site plot area.

### **Application**

- For microwave solid and grid antenna application up to 1.2m (4') diameters, depending on the heights and the environment loading conditions.
- For GSM cellular radio.
- Various other antenna types and sizes, and loading conditions can be accommodated utilizing suitable section of the tower (check with ABL Engineering Department for application).



# RAPID DEPLOYMENT SOLUTIONS

# RAPID DEPLOYMENT CAMOUFLAGE

# MONOPOLE (RDCM)

## Construction Features

### Features:

- The Rapid Deployment Camouflage Monopoles are aesthetically good looking structures, with small footprint, made of multi polygonal modules assembled together in segments by flange-type bolted connections for fast & easy installation.
- Antenna mounts can be fitted to either the shaft or the platform of the pole.
- All structure members conform to ASTM A 572 GR 50 ISO EN 2005 and JIS S 3101 or equivalent standards.
- All welding conform to the requirements of the AWS D 1.1/ D 1.1 M: 2008 AS/ NZS 1554.1: 2004 and similar standards.
- The structure is designed according to the latest American, Eurocode, Canadian, Australian or other applicable international standards for wind and ice loads specified for the particular site.
- All materials are hot-dipped galvanized after fabrication to ISO 1461, AS/ NZS 4680 or ASTM 123 standards.
- All structural bolts conform to ASTM standard A 325 and galvanized to ASTM standard A 153.
- Finishing: hot dipped galvanized and painted.
- Equipped with Fall Arrest System.
- The security fence comprises of standard panel sizes which are made of hot dipped galvanized pipe and chain-link fence, and the top is secured with barbed wire.
- The site is assembled easily and rapidly and will be on air within 2 to 3 days.
- The foundation for the monopole is pre-cast or cast in site.

### Optional Items:

The monopoles are supplied completely with shafts, platforms, ladders, and anchor bolts as required. The following items are supplied as specified:

- Monopole Grounding and Lightning.
- Aviation Warning Lighting System.
- Monopole painting.
- A cable gantry to support transmission lines.
- Antenna mounts to suit specified antennas.
- Antennas and transmission lines as specified by the customer.
- Fall Arrest System device and accessories.
- Precast RCC foundation.
- Site grounding system.
- Optional equipment as requested by the client.
- Supply & installation of the cable tray 200mm-400mm (if required).
- Mains power to GF site (if required).
- Supply and installation of GF cable tray support pole (if required).
- Construction of a 4m wide access road (if required).
- Provide and lay 100mm gravel over 300mm thick compacted road base layer (98% MDD).
- Supply and installation of a fully equipped shelter with dimension (3.2 x 2.0 x 2.9) including the foundation.
- Supply and installation of generator and fuel tank or alternatively commercial power to site.





[www.al-babtain.com.sa](http://www.al-babtain.com.sa)



البابطين لبلانك  
AL-BABTAIN LeBLANC